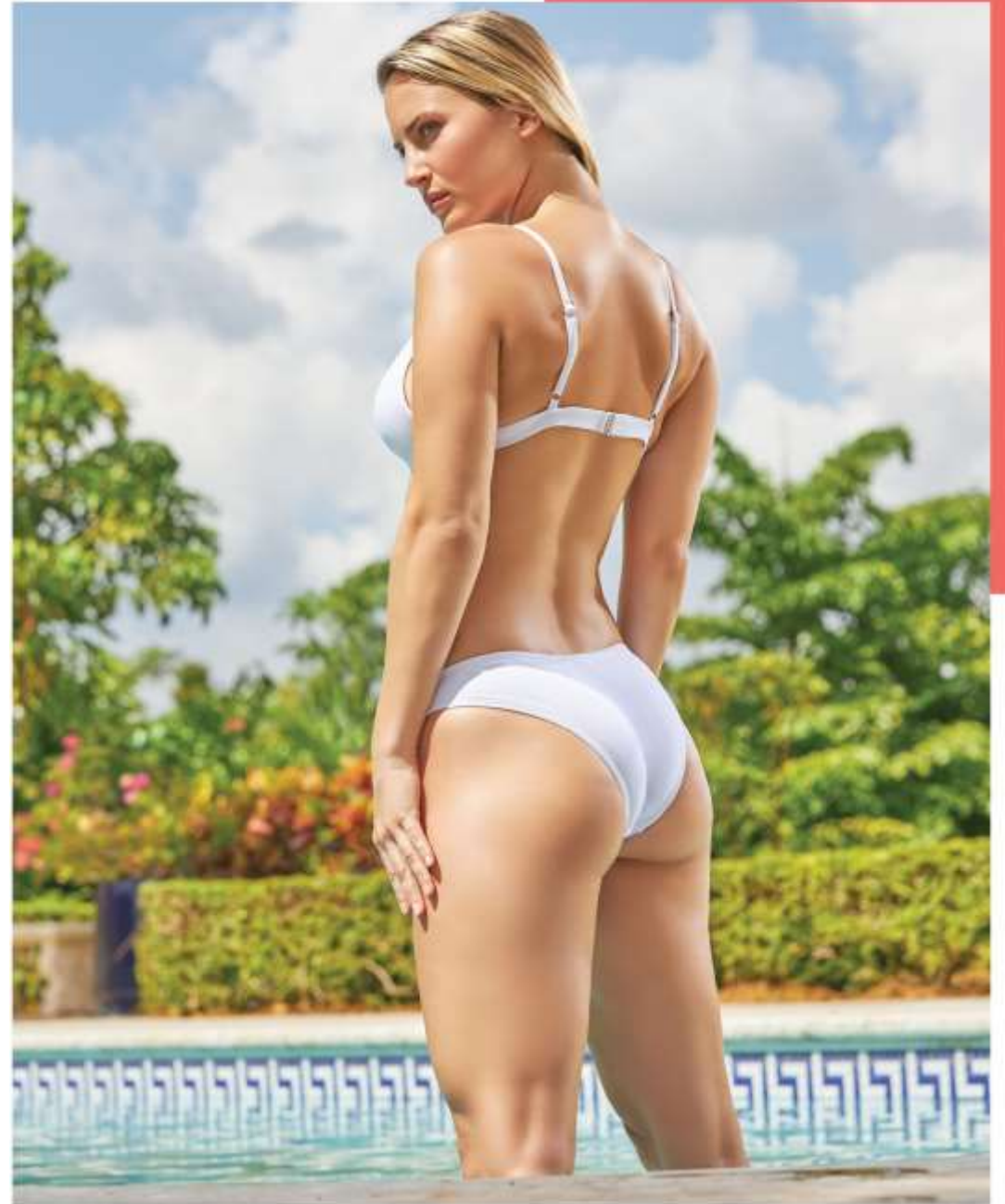


TempSure *Firm*™



***TEMPSURE FIRM BODY
TIGHTENING AND
CELLULITE TREATMENT***



WHAT IS TEMPSURE FIRM?

TempSure Firm is a device used for body contouring and **cellulite** reduction through the application of radiofrequency heat energy. This energy both kills fat cells and stimulates the production of collagen, resulting in tighter, firmer skin and a more contoured appearance wherever it is applied.



TempSure *Firm*

What Areas Does It Treat?

The custom handpieces allow us to apply this treatment to almost any problem area on the body, including:

- Abdomen
- Buttocks
- Arms
- Thighs
- Legs

HOW DOES IT WORK?

The customized body handpieces allow us to deliver just the right amount of radiofrequency energy to the targeted area for the optimal amount of time to destroy excess fat cells in the target location and promote collagen production without harming surrounding tissue. The result is a tighter, more toned appearance, with a reduced appearance of cellulite or sagging skin in the targeted area.



TempSure *Firm*

HOW MANY TREATMENTS ARE NEEDED?

Everyone is different. Most patients need anywhere from 5 to 8 treatments depending on the condition of your skin and what area is being treated.

5-8
Treatments



HOW LONG DOES THE TREATMENT TAKE?

We believe that this procedure is the best way to reduce the appearance of cellulite without surgery. Because no surgery is required, you can schedule a TempSure® Firm appointment as part of your typical day. It usually takes no more than 30-60 minutes depending upon the area being treated and there is no downtime..



DOES THE TREATMENT HURT?

No! In fact, patients report a spa-like deep warming sensation during their treatments, similar to a massage.



WHEN CAN I RETURN TO NORMAL ACTIVITIES?

Right away! you may return to normal daily activities **immediately** after treatment.

Just remember to apply at least SPF 30 to the treated areas that will be exposed to the sun.



WHEN WILL I SEE RESULTS?

Results may be seen a **few weeks to a month** after your last treatment.

The temporary smoothing effect from TempSure Firm will make areas appear more youthful and evenly textured.



TempSure *Firm*

THE PROOF IS IN THE PATIENTS

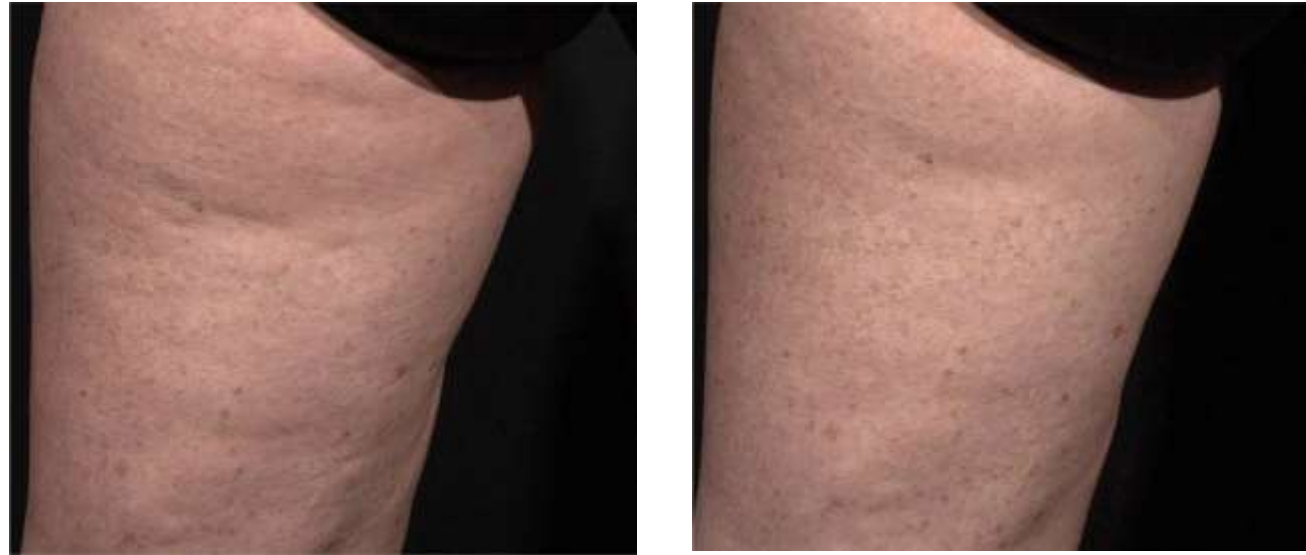


Courtesy of Dr. Jeng

Before and after 3 treatments (abdomen)



THE PROOF IS IN THE PATIENTS



Before and after 3 treatments (thighs)

Courtesy of B. DiBernardo, MD



THE PROOF IS IN THE PATIENTS



TempSure *Firm*[™]

Before and after 5 treatments
Courtesy of B. Katz, MD

921-7027-059

TempSure *Firm*

THE PROOF IS IN THE PATIENTS



TempSure *Firm*™

Before and after 4 treatments
Courtesy of J. Hernandez, MD

921-7027-133_01

These before and after photographs are of a patient treated with the Palomar Handpiece, not the TempSure device, on the buttocks. The Palomar device has substantially smaller spot sizes than the TempSure device and so while individual results vary, similar results are expected.



TempSure *Firm*™

THE PROOF IS IN THE PATIENTS



TEMPSURE^{firm}
by CYNOSURE[®]

Before and after 1 treatment
Courtesy of Dr. Simran Sethi, MD

For optimal results, a series of
3-5 treatments may be required.

TempSure *Firm*

THE PROOF IS IN THE PATIENTS



TempSure *Firm*